

# CT3™ Texture Analyzer

compression and tension testing for rapid QC analysis

## Tension Mode

provides tensile testing capability

An extensive history and customer input have contributed to the development of the most powerful, low cost, stand-alone Texture Analyzer ever produced.

With six test modes (plus calibration check) and a wide choice of accessories, **no other texture analyzer has ever done so much without a computer and software!**

## Standard Test Modes

- Normal Test:**  
a single compression cycle
- Hold Time Test:**  
compress and hold
- Cycle Count Test:**  
compress multiple times
- Bloom Test:**  
gelatin bloom strength test
- TPA Test:**  
texture profile analysis
- Tension Test:**  
tensile testing
- Static Load Test:**  
calibration check

## Texture Loader

Texture Loader software allows adding up to ten custom tests to suit your everyday applications



## Additional Load Cells

Seven measurement ranges up to 50kg

Easy-to-Read Backlit Display

Easy-to-Use Intuitive Controls

USB Computer Interface

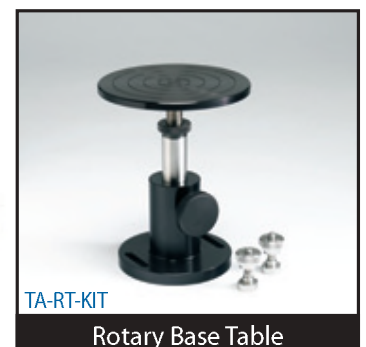
## Choice of Base Tables

allows for larger samples and more accessory choices



TA-BT-KIT

Fixture Base Table



TA-RT-KIT

Rotary Base Table

## Increased Probe Travel Distance

with more space for larger samples

# BROOKFIELD TEXTURE ANALYZER

## What's Included?

Instrument with choice of load cell

**NEW** Texture Loader Software

USB Cable

## Optional Accessories

The CT3 has a wide variety of probes, fixtures and jigs which enable it to be very versatile. Brookfield can also custom design a fixture and probe for most applications.

Choice of Base Table

TexturePro CT Software [TA-CT-PAD-AY](#)

Gelatin Bath System for sample conditioning

Bloom Jar - industry approved [TA-GBB-2](#)

Temperature Probe [DVP-94Y](#)

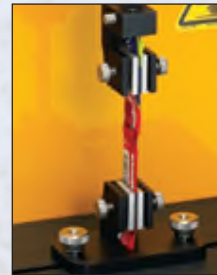
Bubble Level [TA-LVL](#)

Calibration Weight Set

The probes and fixtures shown here are just a small selection from our optional accessories. Brookfield can develop custom equipment to meet most any texture measurement application.



Snap Test Jig



Dual Grip Assembly



Ottawa Cell



Cylinder Probe



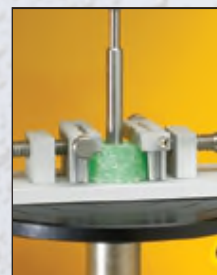
AOAC Probe  
(Bloom Gel Test)



Extrusion Cell



Junior Punch  
Accessory



Adjustable Vice Jig



Small Scale  
Shear Blade

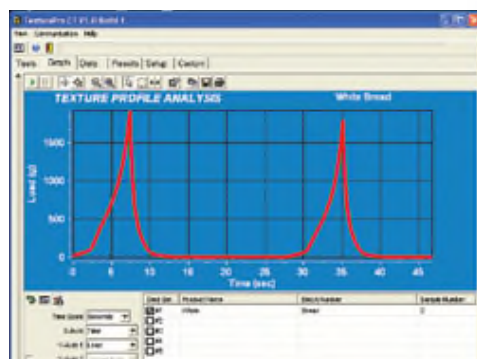
## TexturePro CT Software

Optional

Collect data and **perform detailed data analysis** with real-time graphic plotting.

Easily create custom reports and graphs right from the menu screen.

- Sample identification set-up screen helps new operators quickly get started; test fields outline a variety of parameters
- Intuitive set up for test methods and database file structures in a single window
- Data is captured as a graph and stored in tabular database format
- Advanced data analysis with built-in parameter calculations such as springiness, chewiness, hardness and much more!



MODEL	Load Range/ Resolution*	ALL CT3 MODEL SPECIFICATIONS	
CT3-100	0-100g/0.01g	Speed:	
CT3-1000	0-1000g/0.10g	Range	0.01-0.1mm/S (increments 0.01mm/s)
CT3-1500	0-1500g/0.20g		0.1 - 10mm/S (increments 0.1mm/s)
CT3-4500	0-4500g/0.50g	Accuracy	±0.1% of setpoint
CT3-10kg	1-10000g/1.0g	Position:	
CT3-25kg	1-25000g/2.0g	Range	0-100mm
CT3-50kg	2-50000g/5.0g	Resolution	0.01mm
	g = grams      kg = kilograms	Accuracy	0.1mm
	*Accuracy = ±0.5% Full Scale Range (FSR)	mm = millimeter	s = seconds